

2-JAW PARALLEL GRIPPERS

INSTALLATION SIZE GPP1104

1

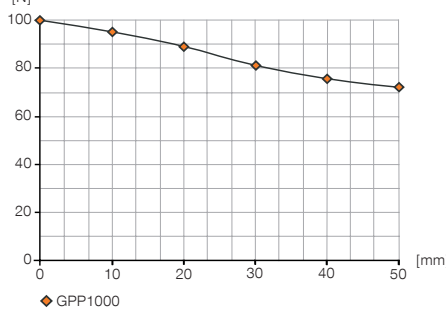
Installation size GPP1104 / 2-Jaw Parallel Grippers / pneumatic / Grippers

▶ PRODUCT SPECIFICATIONS



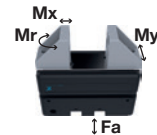
▶ Gripping force diagram

Shows the arithmetic total of the individual forces that occur on the gripper fingers, depending on the gripper finger length



▶ Forces and moments

Displays static forces and moments that can also have an effect, besides the gripping force.



Steel top jaws Plastic top jaws

Mr [Nm]	4	1
Mx [Nm]	4	2
My [Nm]	2	1
Fa [N]	400	100

▶ INCLUDED IN DELIVERY



Plastic top jaws and assembly material
ZUB1100

▶ RECOMMENDED ACCESSORIES



PNP Magnetic field sensor Straight Cable 0,3 m - Connector M8
MFS1000SKHR



NPN Magnetic field sensor Straight Cable 0,3 m - Connector M8
MFS1000SKHR-NPN



Straight Fittings - Quick Connect Style
GVM5



Angled Fittings - Quick Connect Style
WVM5



MCS Adapter plate
AP1100

▶ RECOMMENDED ACCESSORY MCS ADAPTER PLATE



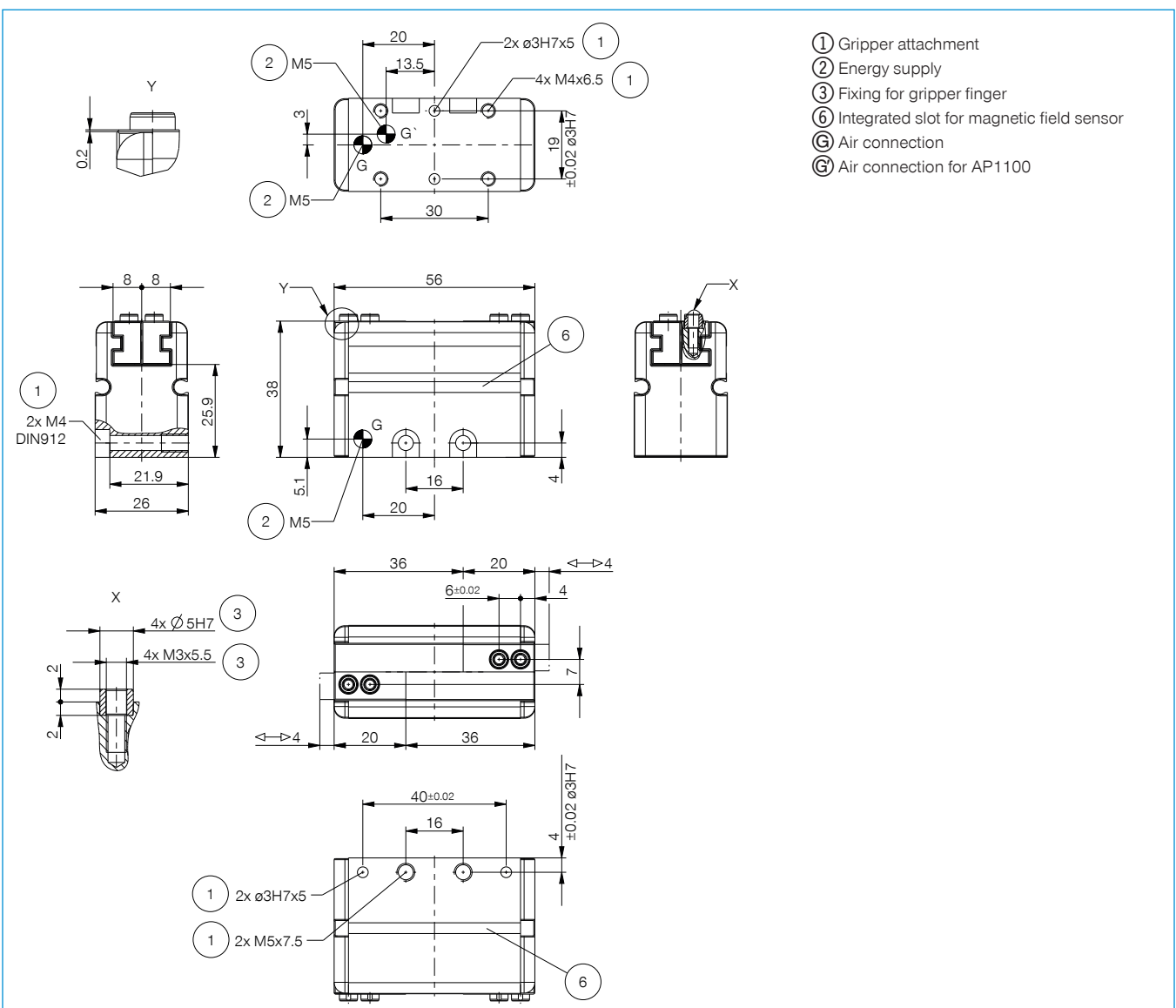
Straight Fittings - Quick Connect Style
GV1-4X6



Angled Fittings - Quick Connect Style
WV1-4X6

Order no.	Technical Data*
Stroke per jaw [mm]	4
Grip force in grip direction min. [N]	100
Travel time in gripping direction [ms]	20
Reset time using spring [ms]	30
Permissible weight per jaw max [kg]	0.10
Repetition accuracy +/- [mm]	0.05
Operating pressure [bar]	2 ... 6
Operating temperature [°C]	5 ... +60
Air volume per cycle [cm³]	1.4
Protection to IEC 60529	IP30
Weight [kg]	0.16

*All data measured at 6 bar

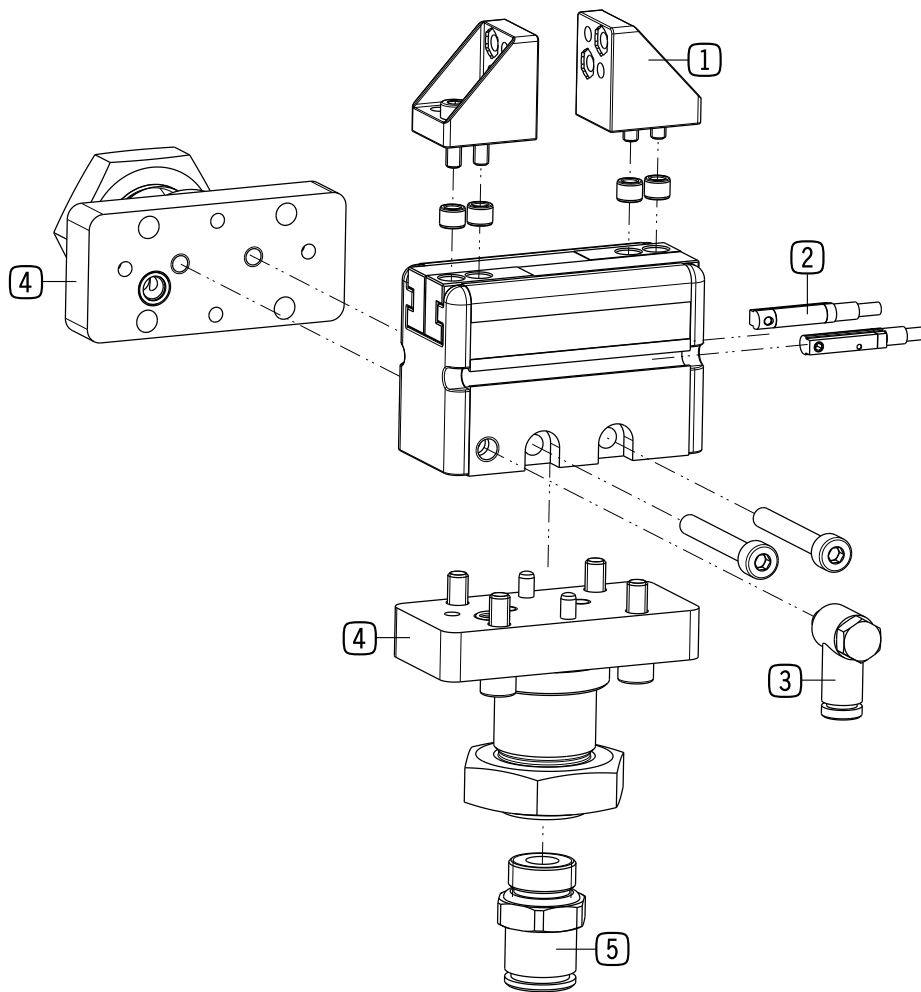


2-JAW PARALLEL GRIPPERS

SERIES GPP1000

1

Series GPP1000 / 2-Jaw Parallel Grippers / pneumatic / Grippers



► INCLUDED IN DELIVERY



Plastic top jaws and assembly material
ZUB1100

▶ RECOMMENDED ACCESSORIES



PNP Magnetic field sensor Straight
Cable 0,3 m - Connector M8
MFS1000SKHR



NPN Magnetic field sensor Straight
Cable 0,3 m - Connector M8
MFS1000SKHR-NPN



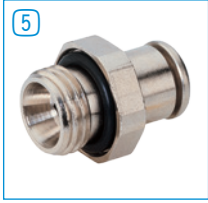
Straight Fittings - Quick
Connect Style
GVM5



Angled Fittings - Quick
Connect Style
WVM5



MCS Adapter plate
AP1100

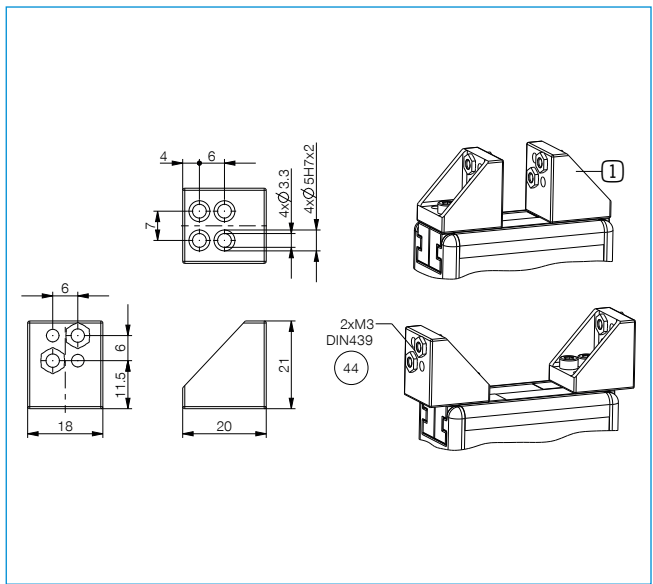
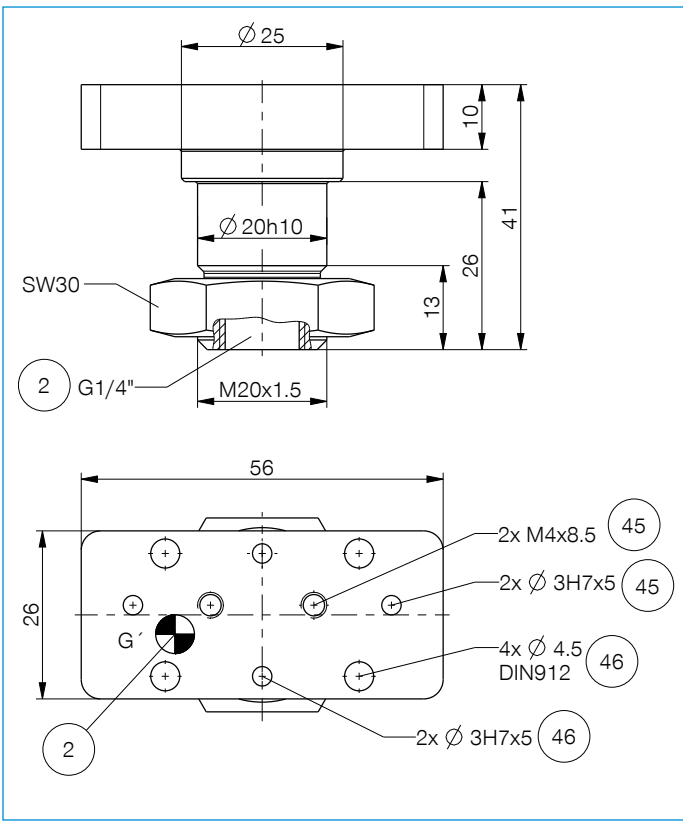


Straight Fittings - Quick
Connect Style
GV1-4X6



Angled Fittings - Quick
Connect Style
WV1-4X6

▶ TECHNICAL DRAWINGS ACCESSORIES



- ② Energy supply
- ④④ Fixing for gripper finger
- ④⑤ Horizontal mounting
- ④⑥ Vertical mounting
- ⓐ Gripper air connection

2-JAW PARALLEL GRIPPERS

SERIES GPP1000

▶ PRODUCT ADVANTAGES



“Cost-effective”

- ▶ Parallel gripper with an unbeatable price/performance ratio
- ▶ Gripper jaw set and fixation material included
- ▶ Can be configured for spring opening or spring closing
- ▶ One installation size, three strokes: 4, 8 and 16 mm per gripper jaw
- ▶ Gripping force of 100 N
- ▶ Service life of up to 2 million cycles

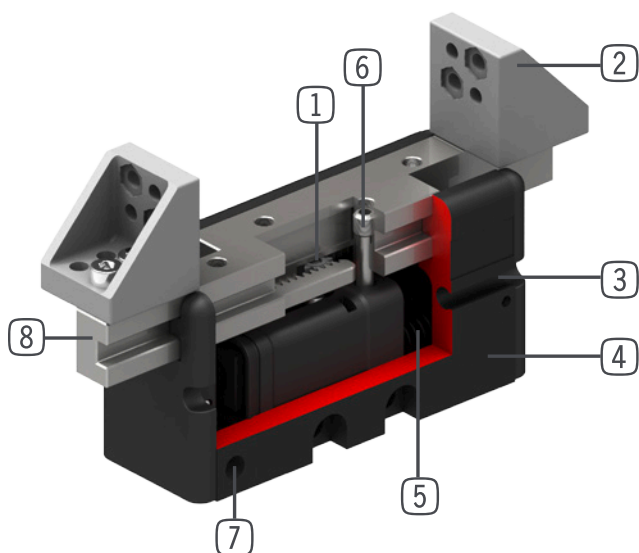
▶ THE BEST PRODUCT FOR YOUR APPLICATION



- ▶ **Our products welcome the challenge!**
Extreme conditions, all over the world—our tried and tested components and systems give you endless possibilities.
Find the best product for your specific use:
www.zimmer-group.de



► BENEFITS IN DETAIL



- ① **Synchronization**
 - via rack and pinion
- ② **Intermediate jaws**
 - incl. mounting material
 - included in scope of delivery
- ③ **Sensing**
 - mounting and positioning of magnetic field sensors
- ④ **Lightweight housing**
 - Hard-coated aluminum alloy
- ⑤ **Single-acting pneumatic cylinder**
 - Spring return
- ⑥ **Jaw slave screw**
 - for changing the gripper's direction of force
- ⑦ **Energy supply**
 - possible from several sides
- ⑧ **Gripper jaw**
 - for connecting the intermediate jaw or an individual gripper finger via centering sleeves

► SERIES CHARACTERISTICS



Number of installation sizes	1
Stroke per jaw	4 mm - 16 mm
Gripping force	100 N
Weight	0,16 kg - 0,20 kg
AP class	1



Magnetic field sensor



IP30



2 million maintenance-free cycles (max.)