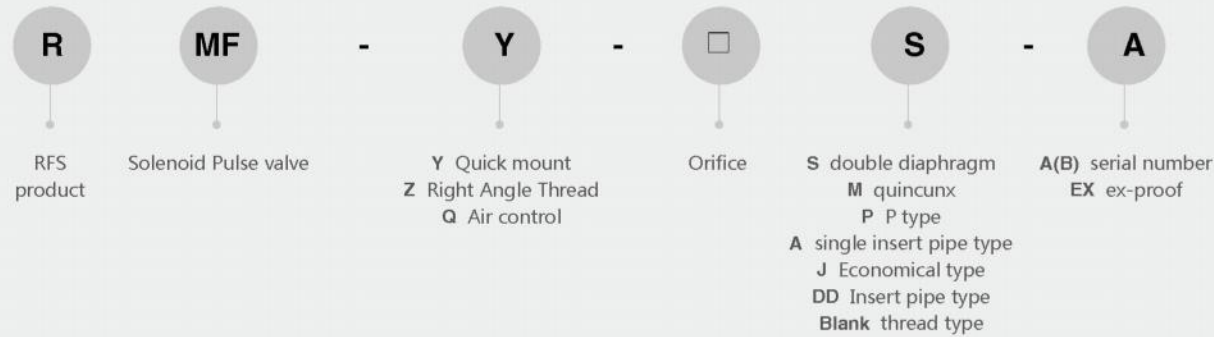


➤ Right Angle Pulse Jet Valve

- Introduction of advanced international technology and make some improvements
- Pulse Valve used for controlling the compressed air of dust remover filter system
- The key components adopt advanced material
- Pneumatic control type, solenoid control type and Ex-proof solenoid control type for optional
- Female thread connection port, it is easy for installing



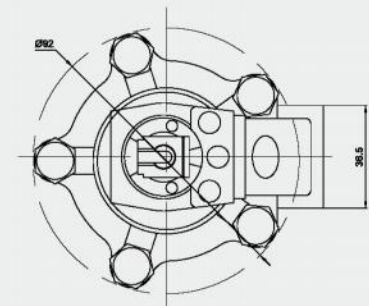
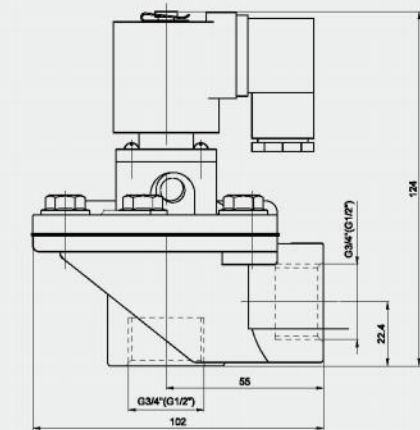
Ordering Code



Parameters

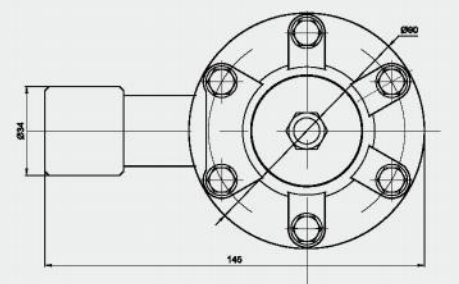
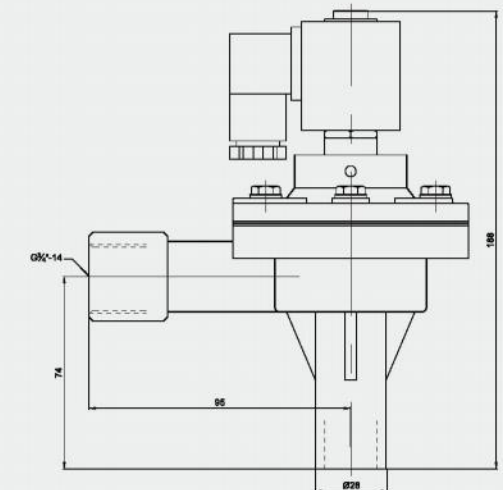
Model	Working pressure	Ambient Temp.	Relative Humidity	Media	Voltage	Power	Diaphragm Life	Orifice	Connection ports
RMF-Z-15M	0.3 ~ 0.8MPa	-5~55°C	< 85%	Clean Air	AC110V AC220V DC24V ±10%	DC20W AC25VA	Over one Million cycles	Φ15mm	G1/2"
RMF-Z-20M								Φ20mm	G3/4"
RMF-Z-20J						Φ20mm		G3/4"	
RMF-Z-25J						Φ25mm		G1"	
RMF-Z-20A						Φ20mm		G3/4"	
RMF-Z-20P						Φ20mm		G3/4"	
RMF-Z-25P						Φ25mm		G1"	
RMF-Z-20						Φ20mm		G3/4"	
RMF-Z-25						Φ25mm		G1	
RMF-Z-35P						Φ35mm		G1 1/2"	
RMF-Z-40S						Φ40mm		G1 1/2"	
RMF-Z-45P						Φ45mm		G1 1/2"	
RMF-Z-50S						Φ50mm		G2"	
RMF-Z-50S-A						Φ50mm		G2"	
RMF-Z-62S						Φ62mm		G2 1/2"	
RMF-Z-62S-A						Φ62mm		G2 1/2"	
RMF-Z-76S						Φ76mm		G3"	
RMF-25DD						Φ25mm		Φ35	
RMF-45DD						Φ40mm		Φ50	

Right Angle Solenoid Pulse Valve



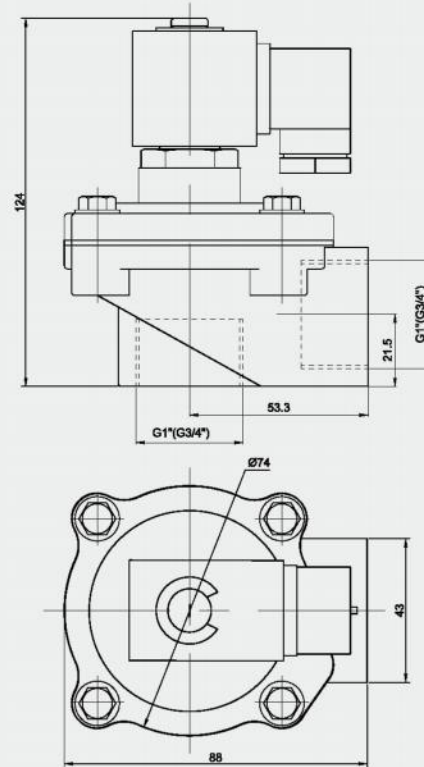
Model	RMF-Z-15M	RMF-Z-20M
Working-pressure	0.3 ~ 0.8MPa	
Ambient Temperature	-5 ~ 55°C	
Relative Humidity	< 85%	
Working Medium	Clean Air	
Voltage	AC110V / AC220V / DC24V	
Diaphragm Life	Over One Million Cycles	
Orifice	φ 15	φ 20
Connection Port	G1/8"	G3/4"

Right Angle Solenoid Pulse Valve



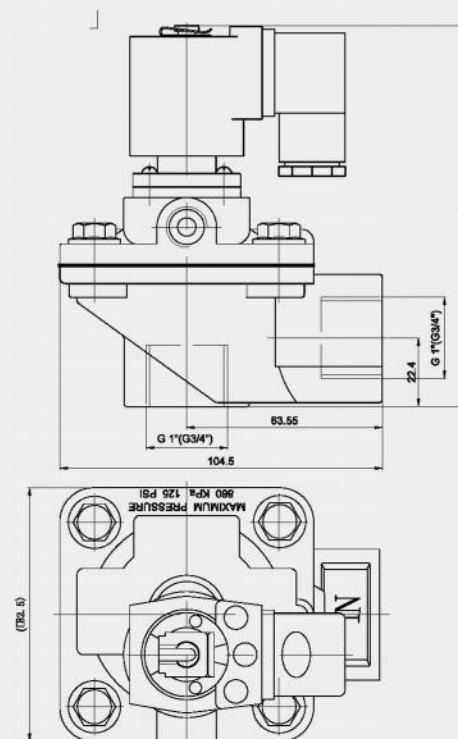
Model	RMF-Z-20A
Working-pressure	0.3 ~ 0.8MPa
Ambient Temperature	-5 ~ 55°C
Relative Humidity	< 85%
Working Medium	Clean Air
Voltage	AC110V / AC220V / DC24V
Diaphragm Life	Over One Million Cycles
Orifice	φ 20
Connection Port	G3/4"

Right Angle Solenoid Pulse Valve



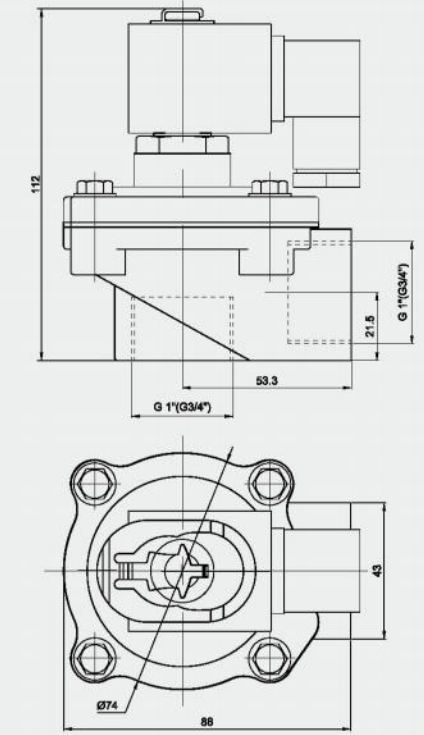
Model	RMF-Z-20J	RMF-Z-25J
Working-pressure	0.3 ~ 0.8MPa	
Ambient Temperature	-5 ~ 55°C	
Relative Humidity	< 85%	
Working Medium	Clean Air	
Voltage	AC110V / AC220V / DC24V	
Diaphragm Life	Over One Million Cycles	
Orifice	φ 20	φ 25
Connection Port	G3/4"	G1"

Right Angle Solenoid Pulse Valve



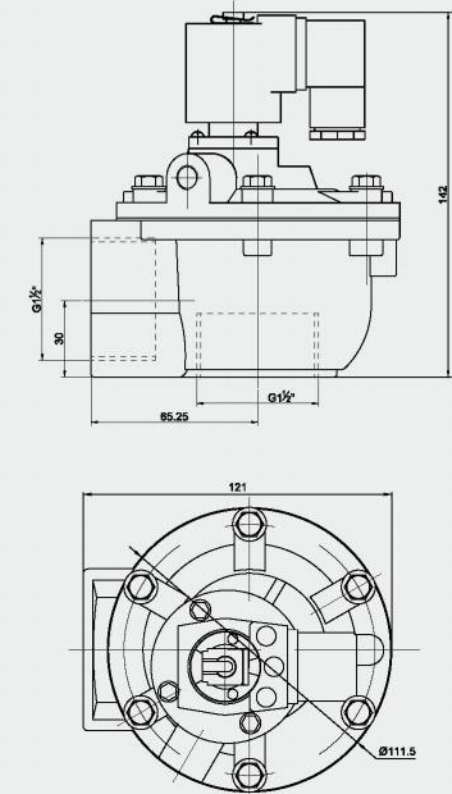
Model	RMF-Z-25P	RMF-Z-20P
Working-pressure	0.3 ~ 0.8MPa	
Ambient Temperature	-5 ~ 55°C	
Relative Humidity	< 85%	
Working Medium	Clean Air	
Voltage	AC110V / AC220V / DC24V	
Diaphragm Life	Over One Million Cycles	
Orifice	φ 25	φ 20
Connection Port	G1"	G3/4"

Right Angle Solenoid Pulse Valve



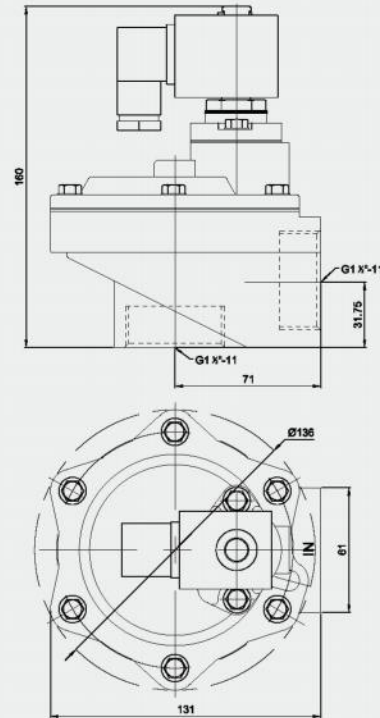
Model	RMF-Z-25	RMF-Z-20
Working-pressure	0.3 ~ 0.8MPa	
Ambient Temperature	-5 ~ 55°C	
Relative Humidity	< 85%	
Working Medium	Clean Air	
Voltage	AC110V / AC220V / DC24V	
Diaphragm Life	Over One Million Cycles	
Orifice	φ 25	φ 20
Connection Port	G1"	G3/4"

Right Angle Solenoid Pulse Valve



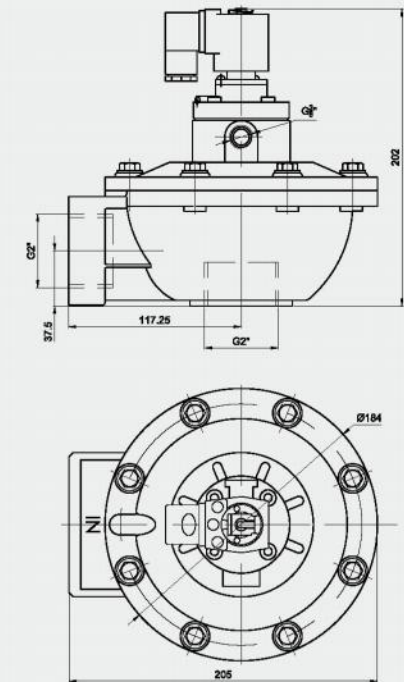
Model	RMF-Z-35P
Working-pressure	0.3 ~ 0.8MPa
Ambient Temperature	-5 ~ 55°C
Relative Humidity	< 85%
Working Medium	Clean Air
Voltage	AC110V / AC220V / DC24V
Diaphragm Life	Over One Million Cycles
Orifice	φ 35
Connection Port	G1-1/2"

Right Angle Solenoid Pulse Valve



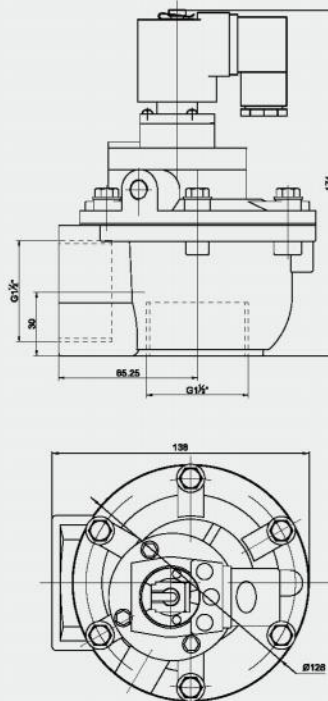
Model	RMF-Z-40S
Working-pressure	0.3 ~ 0.8MPa
Ambient Temperature	-5 ~ 55°C
Relative Humidity	< 85%
Working Medium	Clean Air
Voltage	AC110V / AC220V / DC24V
Diaphragm Life	Over One Million Cycles
Orifice	φ 40
Connection Port	G1 1/2"

Right Angle Solenoid Pulse Valve



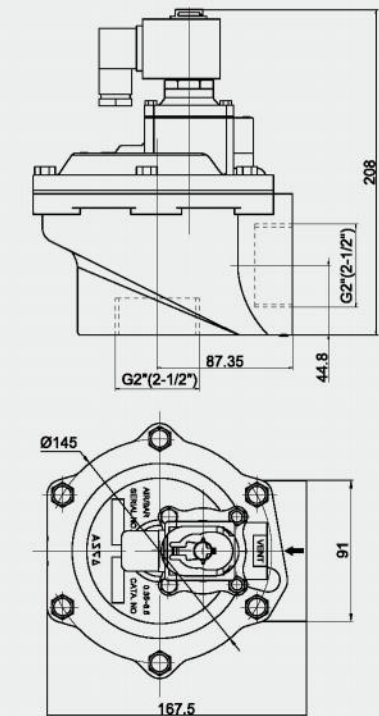
Model	RMF-Z-50S
Working-pressure	0.3 ~ 0.8MPa
Ambient Temperature	-5 ~ 55°C
Relative Humidity	< 85%
Working Medium	Clean Air
Voltage	AC110V / AC220V / DC24V
Diaphragm Life	Over One Million Cycles
Orifice	φ 50
Connection Port	G2"

Right Angle Solenoid Pulse Valve



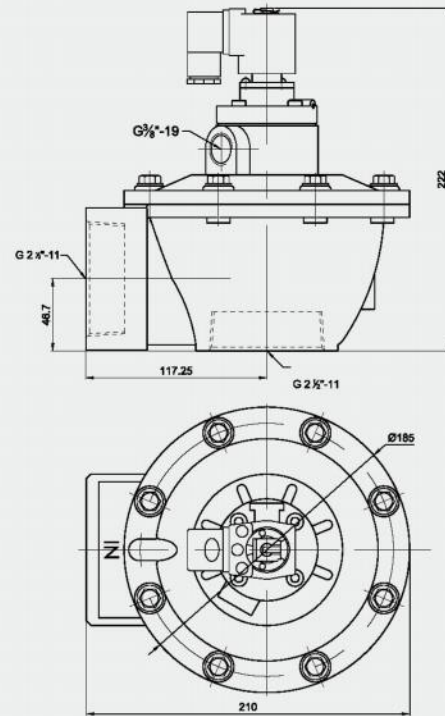
Model	RMF-Z-45P
Working-pressure	0.3 ~ 0.8MPa
Ambient Temperature	-5 ~ 55°C
Relative Humidity	< 85%
Working Medium	Clean Air
Voltage	AC110V / AC220V / DC24V
Diaphragm Life	Over One Million Cycles
Orifice	φ 45
Connection Port	G1 1/2"

Right Angle Solenoid Pulse Valve



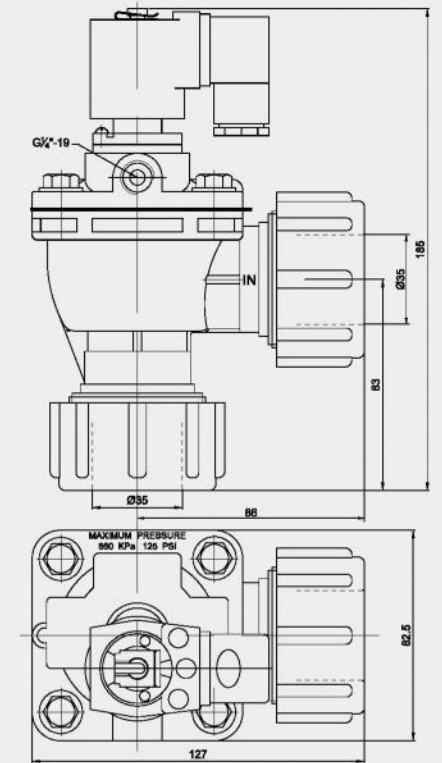
Model	RMF-Z-50S-A	RMF-Z-62S-A
Working-pressure	0.3 ~ 0.8MPa	
Ambient Temperature	-5 ~ 55°C	
Relative Humidity	< 85%	
Working Medium	Clean Air	
Voltage	AC110V / AC220V / DC24V	
Diaphragm Life	Over One Million Cycles	
Orifice	φ 50	φ 62
Connection Port	G2"	G2-1/2"

Right Angle Solenoid Pulse Valve



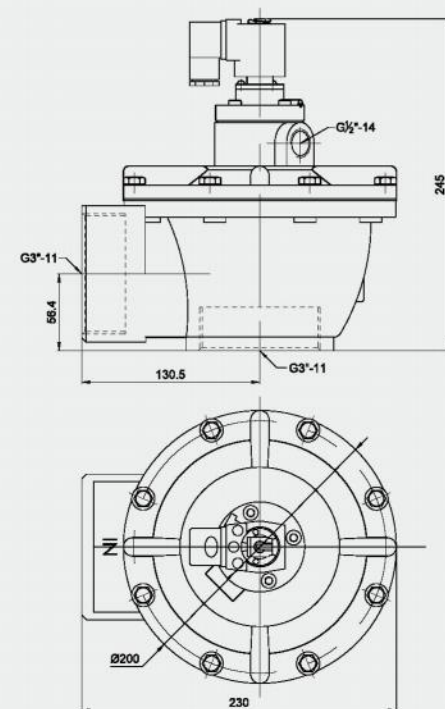
Model	RMF-Z-62S
Working-pressure	0.3 ~ 0.8MPa
Ambient Temperature	-5 ~ 55°C
Relative Humidity	< 85%
Working Medium	Clean Air
Voltage	AC110V / AC220V / DC24V
Diaphragm Life	Over One Million Cycles
Orifice	φ 62
Connection Port	G2-1/2"

Right Angle (DD Type) Solenoid Pulse Valve



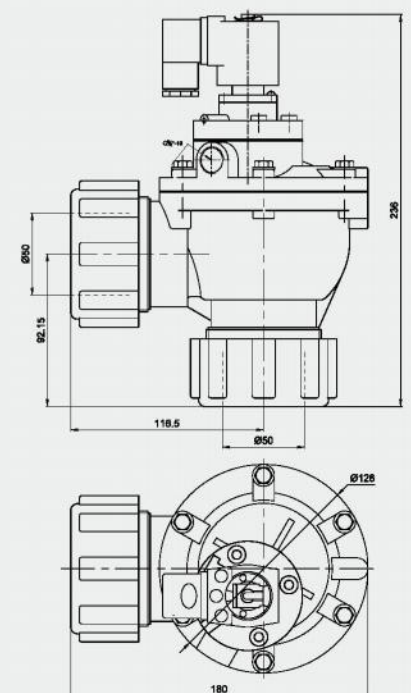
Model	RMF-25DD
Working-pressure	0.3 ~ 0.8MPa
Ambient Temperature	-5 ~ 55°C
Relative Humidity	< 85%
Working Medium	Clean Air
Voltage	AC110V / AC220V / DC24V
Diaphragm Life	Over One Million Cycles
Orifice	φ 25
Connection Port	φ 35

Right Angle Solenoid Pulse Valve



Model	RMF-Z-76S
Working-pressure	0.3 ~ 0.8MPa
Ambient Temperature	-5 ~ 55°C
Relative Humidity	< 85%
Working Medium	Clean Air
Voltage	AC110V / AC220V / DC24V
Diaphragm Life	Over One Million Cycles
Orifice	φ 76
Connection Port	G3"

Right Angle (DD Type) Solenoid Pulse Valve



Model	RMF-45DD
Working-pressure	0.3 ~ 0.8MPa
Ambient Temperature	-5 ~ 55°C
Relative Humidity	< 85%
Working Medium	Clean Air
Voltage	AC110V / AC220V / DC24V
Diaphragm Life	Over One Million Cycles
Orifice	φ 40
Connection Port	φ 50

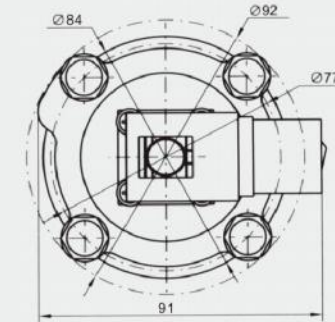
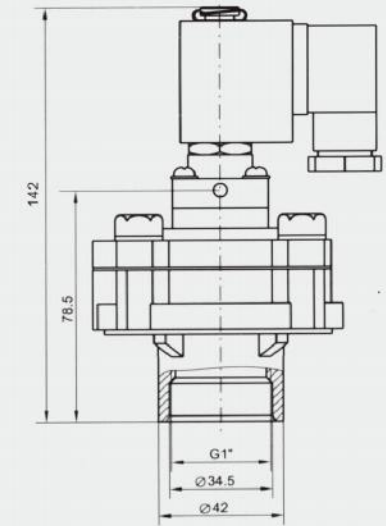
➤ Quick Mount Pulse Solenoid Valve



Parameters

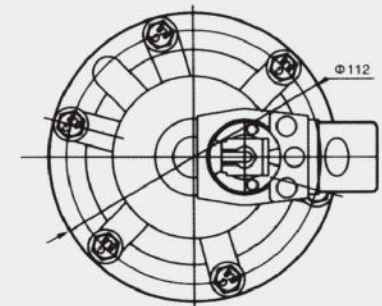
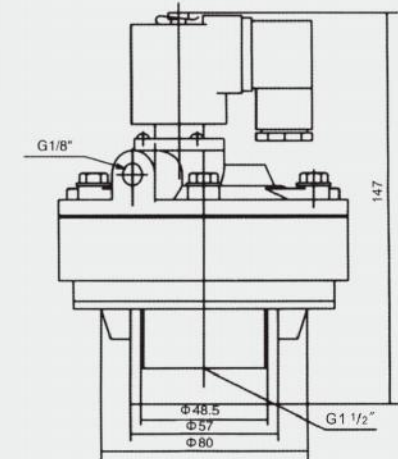
Model	Working pressure	Ambient Temp.	Relative Humidity	Media	Voltage	Power	Diaphragm Life	Orifice	Connection ports
RMF-Y-25	0.3 ~ 0.8MPa	-5~55°C	< 85%	Clean Air	AC110V AC220V DC24V ±10%	DC12W/AC15VA	Over one Million cycles	Φ25mm	G1"
RMF-Y-40								Φ45mm	G1 1/2"
RMF-Y-50S						Φ50mm		Φ62.5mm	
RMF-Y-62S						Φ62mm		Φ76mm	
RMF-Y-76S						Φ76mm		Φ86mm	
RMF-Y-76S-A1						Φ75mm		Φ88mm	
RMF-Y-86S	Φ76mm	Φ90mm							

Solenoid Pulse Valve



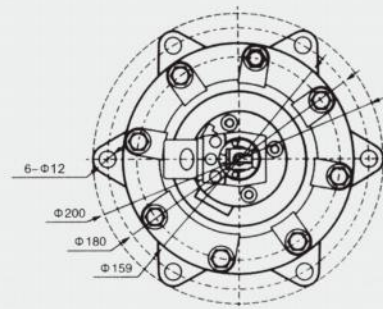
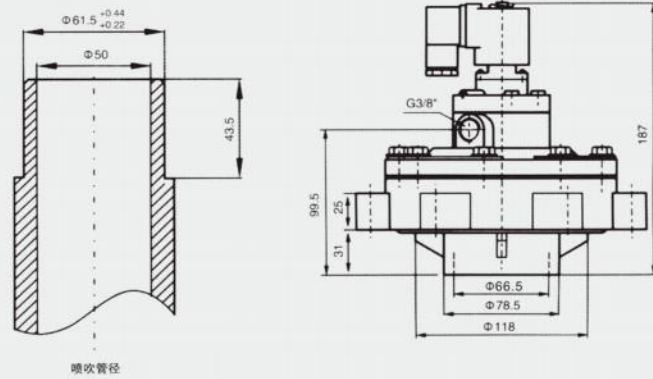
Model	RMF-Y-25
Working-pressure	0.3 ~ 0.8MPa
Ambient Temperature	-5 ~ 55°C
Relative Humidity	< 85%
Working Medium	Clean Air
Voltage	AC110V / AC220V / DC24V
Diaphragm Life	Over One Million Cycles
Orifice	φ 25
Connection Port	φ 42

Solenoid Pulse Valve



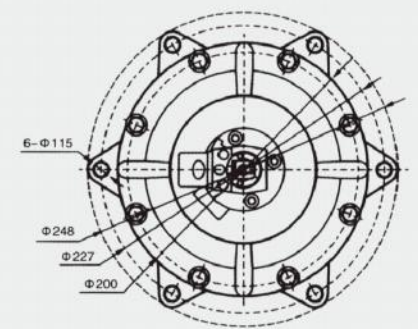
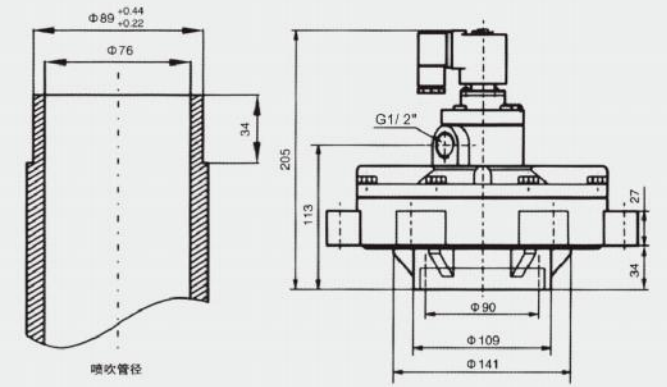
Model	RMF-Y-40
Working-pressure	0.3 ~ 0.8MPa
Ambient Temperature	-5 ~ 55°C
Relative Humidity	< 85%
Working Medium	Clean Air
Voltage	AC110V / AC220V / DC24V
Diaphragm Life	Over One Million Cycles
Orifice	φ 45
Connection Port	φ 50

Solenoid Pulse Valve



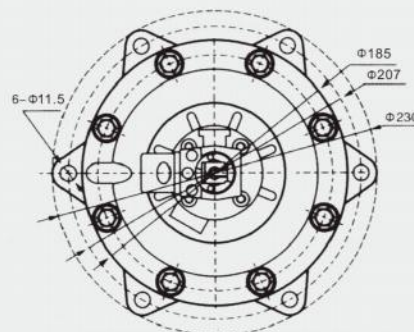
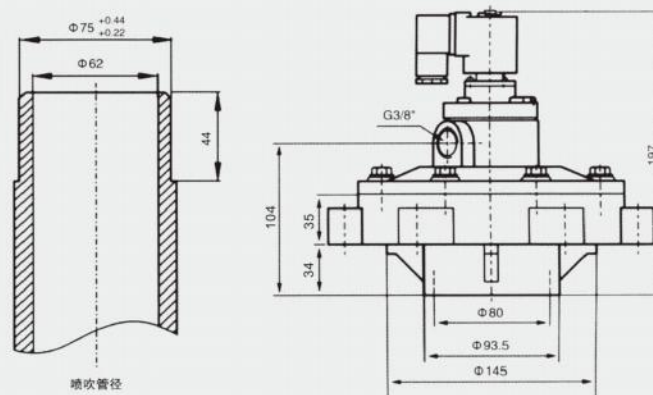
Model	RMF-Y-50S
Working-pressure	0.3 ~ 0.8MPa
Ambient Temperature	-5 ~ 55°C
Relative Humidity	< 85%
Working Medium	Clean Air
Voltage	AC110V / AC220V / DC24V
Diaphragm Life	Over One Million Cycles
Orifice	$\phi 50$
Connection Port	$\phi 65$

Solenoid Pulse Valve



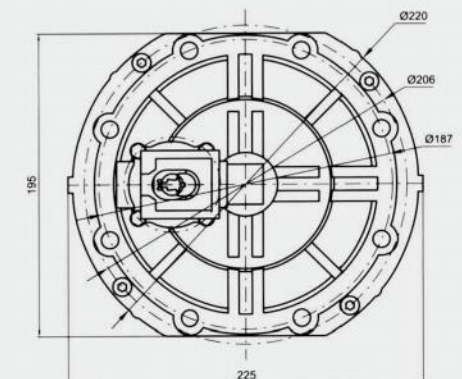
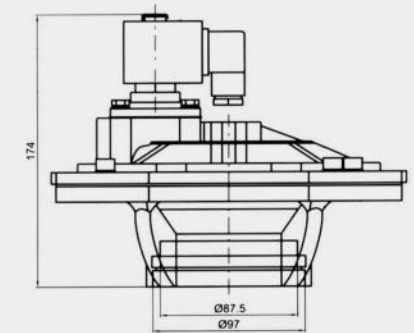
Model	RMF-Y-76S
Working-pressure	0.3 ~ 0.8MPa
Ambient Temperature	-5 ~ 55°C
Relative Humidity	< 85%
Working Medium	Clean Air
Voltage	AC110V / AC220V / DC24V
Diaphragm Life	Over One Million Cycles
Orifice	$\phi 76$
Connection Port	$\phi 90$

Solenoid Pulse Valve



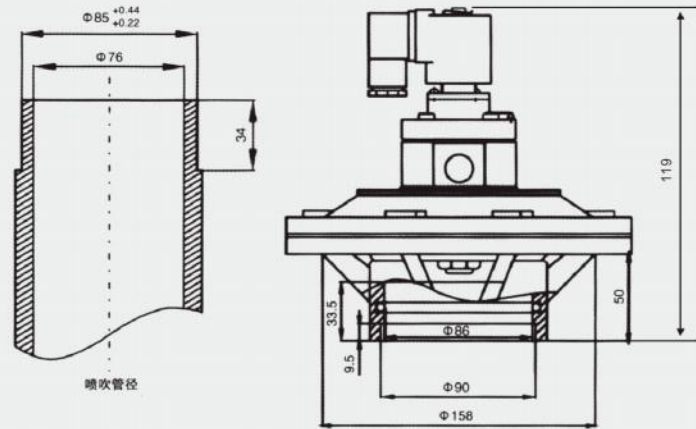
Model	RMF-Y-62S
Working-pressure	0.3 ~ 0.8MPa
Ambient Temperature	-5 ~ 55°C
Relative Humidity	< 85%
Working Medium	Clean Air
Voltage	AC110V / AC220V / DC24V
Diaphragm Life	Over One Million Cycles
Orifice	$\phi 62$
Connection Port	$\phi 80$

Solenoid Pulse Valve

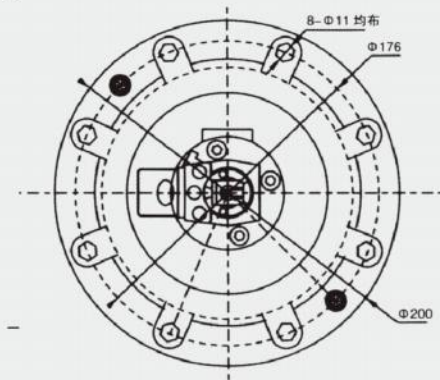


Model	RMF-Y-76S-A1
Working-pressure	0.3 ~ 0.8MPa
Ambient Temperature	-5 ~ 55°C
Relative Humidity	< 85%
Working Medium	Clean Air
Voltage	AC110V / AC220V / DC24V
Diaphragm Life	Over One Million Cycles
Orifice	$\phi 76$
Connection Port	$\phi 89$

Solenoid Pulse Valve



Model	RMF-Y-86S
Working-pressure	0.3 ~ 0.8MPa
Ambient Temperature	-5 ~ 55°C
Relative Humidity	< 85%
Working Medium	Clean Air
Voltage	AC110V / AC220V / DC24V
Diaphragm Life	Over One Million Cycles
Orifice	$\phi 80$
Connection Port	$\phi 90$



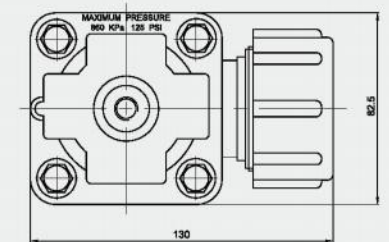
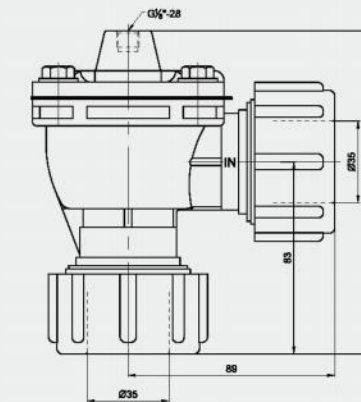
➤ Air Control Pulse Jet Valve



Parameters

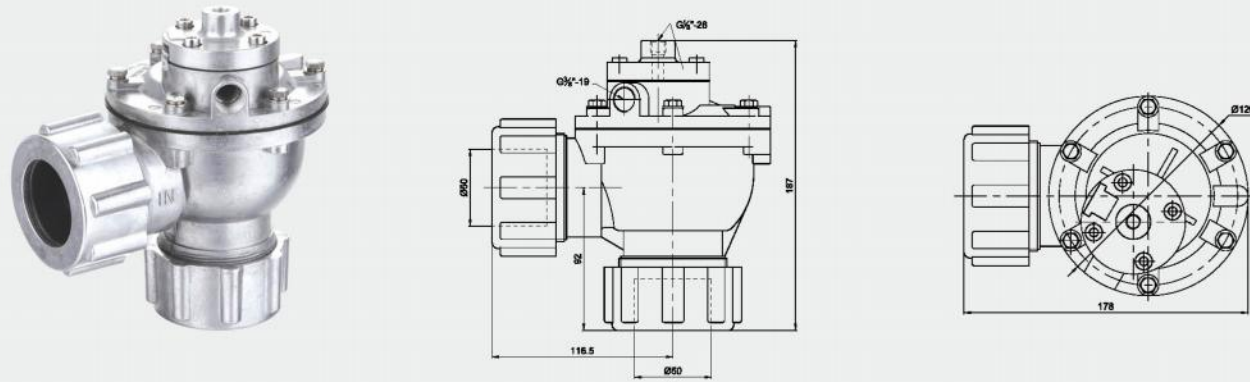
Model	Working pressure	Ambient Temp	Relative Humidity	Media	Diaphragm Life	Orifice	Connection ports
RMF-Q-25DD	0.3 ~ 0.8MPa	-5 ~ 55° C	< 85%	Clean Air	Over one Million cycles	$\phi 25$	$\phi 35$
RMF-Q-45DD						$\phi 45$	$\phi 50$
RMF-Q-20P						$\phi 20$	G3/4"
RMF-Q-25P						$\phi 25$	G1"
RMF-ZQ-45P						$\phi 45$	G1-1/2"
RMF-ZQ-50S						$\phi 50$	G2"
RMF-ZQ-62S						$\phi 62$	G2-1/2"
RMF-ZQ-76S						$\phi 76$	G3"
RMF-YQ-50S						$\phi 50$	$\phi 62.5$
RMF-YQ-62S						$\phi 62$	$\phi 76$
RMF-YQ-76S	$\phi 76$	$\phi 90$					

Right Angle (DD type) Air Control Pulse Valve



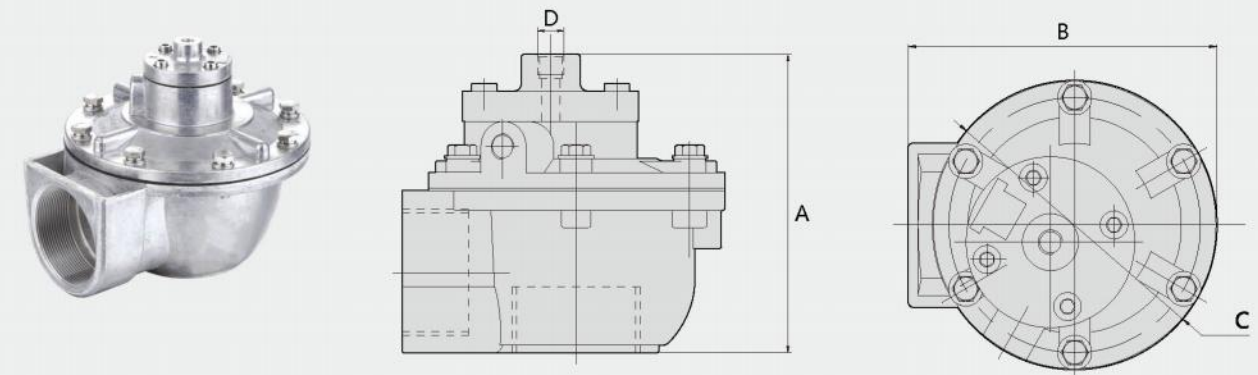
Model	RMF-Q-25DD
Working-pressure	0.3 ~ 0.8MPa
Ambient Temperature	-5 ~ 55°C
Relative Humidity	< 85%
Working Medium	Clean Air
Voltage	AC110V / AC220V / DC24V
Diaphragm Life	Over One Million Cycles
Orifice	$\phi 25$
Connection Port	$\phi 35$

Right Angle (DD type) Air Control Pulse Valve



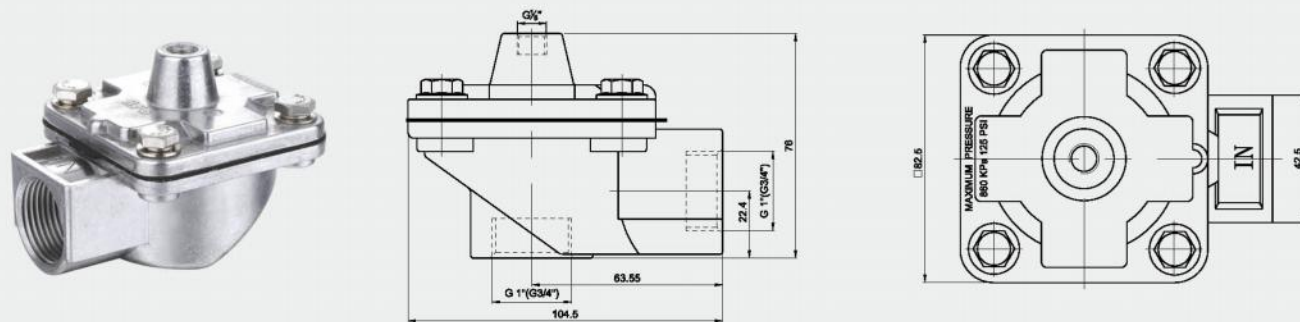
Model	RMF-Q-45DD
Working-pressure	0.3 ~ 0.8MPa
Ambient Temperature	-5 ~ 55°C
Relative Humidity	< 85%
Working Medium	Clean Air
Voltage	AC110V / AC220V / DC24V
Diaphragm Life	Over One Million Cycles
Orifice	φ 45
Connection Port	φ 50

Right Angle Air Control Pulse Valve



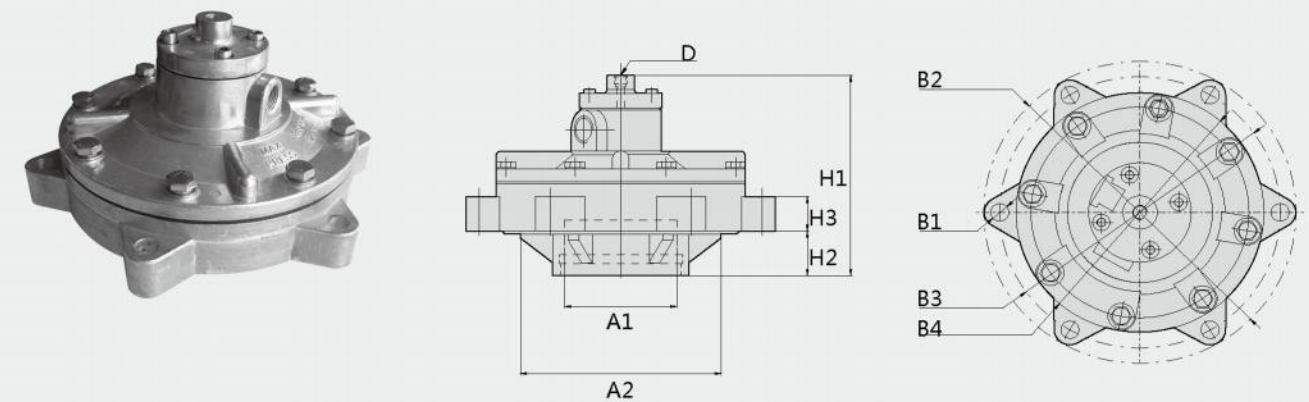
Model	A	B	C	D
RMF-ZQ-45P	125	138	Φ126	G1/8"
RMF-ZQ-50s	153	205	Φ184	G1/8"
RMF-ZQ-62s	173	210	Φ185	G1/8"
RMF-ZQ-76s	195	230	Φ200	G1/8"

Right Angle Air Control Pulse Valve



Model	RMF-Q-25P	RMF-Q-20P
Working-pressure	0.3 ~ 0.8MPa	
Ambient Temperature	-5 ~ 55°C	
Relative Humidity	< 85%	
Working Medium	Clean Air	
Voltage	AC110V / AC220V / DC24V	
Diaphragm Life	Over One Million Cycles	
Orifice	φ 25	φ 20
Connection Port	G1"	G3/4"

In Line Gas control Pulse valve



Model	A1	A2	B1	B2	B3	B4	H1	H2	H3	D
RMF-YQ-50S	Φ62.5	Φ118	6-Φ12	Φ200	Φ180	Φ159	138	30.5	34.5	G1/8"
RMF-YQ-62S	Φ76	Φ143.5	6-Φ11.5	Φ230	Φ207	Φ185	148	34	35	
RMF-YQ-76S	Φ90	Φ141	6-Φ12	Φ248	Φ277	Φ200	156	34.5	27	

➤ Explosion-proof Pulse Jet Valve

- Ex class: ExmI/II T4
- Using our own Explosion-proof coil, All the solenoid pulse valves can be changed into Ex-proof style
- Voltage & wire length can be made as your request
- When you order Ex-proof solenoid valve, Add "Ex" after model



Parameters

Model	Working pressure	Ambient Temp.	Relative Humidity	Media	Voltage	Power	Orifice	Connection ports
RMF-25DD-EX	0.3 ~ 0.8MPa	-5~55° C	< 85%	Clean Air	AC110V AC220V DC24V DC12V ±10%	DC15W	Φ25mm	Φ31mm
RMF-45DD-EX						AC13VA	Φ40mm	Φ50mm
RMF-Z-25J-EX						DC11W	Φ25mm	G1"
RMF-Z-20J-EX						AC13VA	Φ20mm	G3/4"
RMF-Z-20M-EX						DC15W	Φ20mm	G3/4"
RMF-Z-15M-EX						AC13VA	Φ15mm	G1/2"
RMF-Z-20A-EX						DC11W/AC13VA	Φ20mm	G3/4"
RMF-Z-20P-EX						DC15W AC13VA	Φ20mm	G3/4"
RMF-Z-25P-EX							Φ25mm	G1"
RMF-Z-35P-EX							Φ35mm	G1 1/2"
RMF-Z-40S-EX							DC13W/AC23VA	Φ40mm
RMF-Z-45P-EX						DC15W/AC13VA	Φ45mm	G1 1/2"
RMF-Z-50S-EX							Φ50mm	G2"
RMF-Z-62S-EX							Φ62mm	G2 1/2"
RMF-Z-76S-EX						DC13W/AC23VA	Φ76mm	G3"
RMF-Y-40S-EX							Φ45mm	G1 1/2"
RMF-Y-50S-EX							DC15W AC13VA	Φ50mm
RMF-Y-62S-EX						Φ62mm		Φ76mm
RMF-Y-76S-EX							Φ76mm	Φ90mm



➤ Pulse signal controller & parts

Sequential controller is main control part of bag filter system. It controls the on/off of pulse solenoid valves sequentially, so circularly the air runs in the bag and shakes off the dust which adsorbs on bag surface, make the bag keep clean and sufficient air permeability.



Pulse signal controller

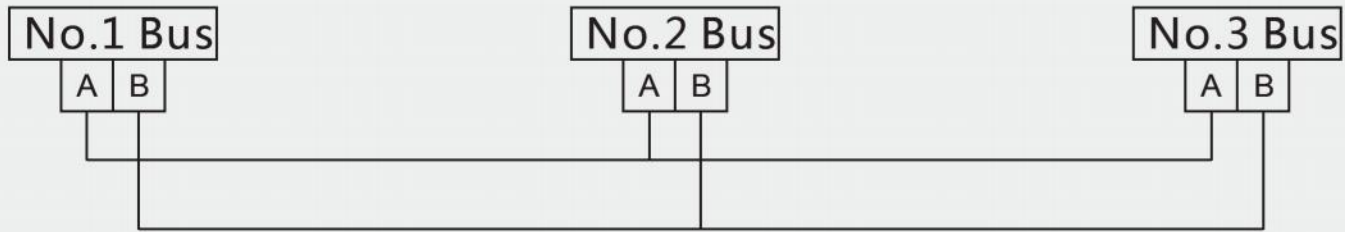
PIC-series Pulse Signal Controller



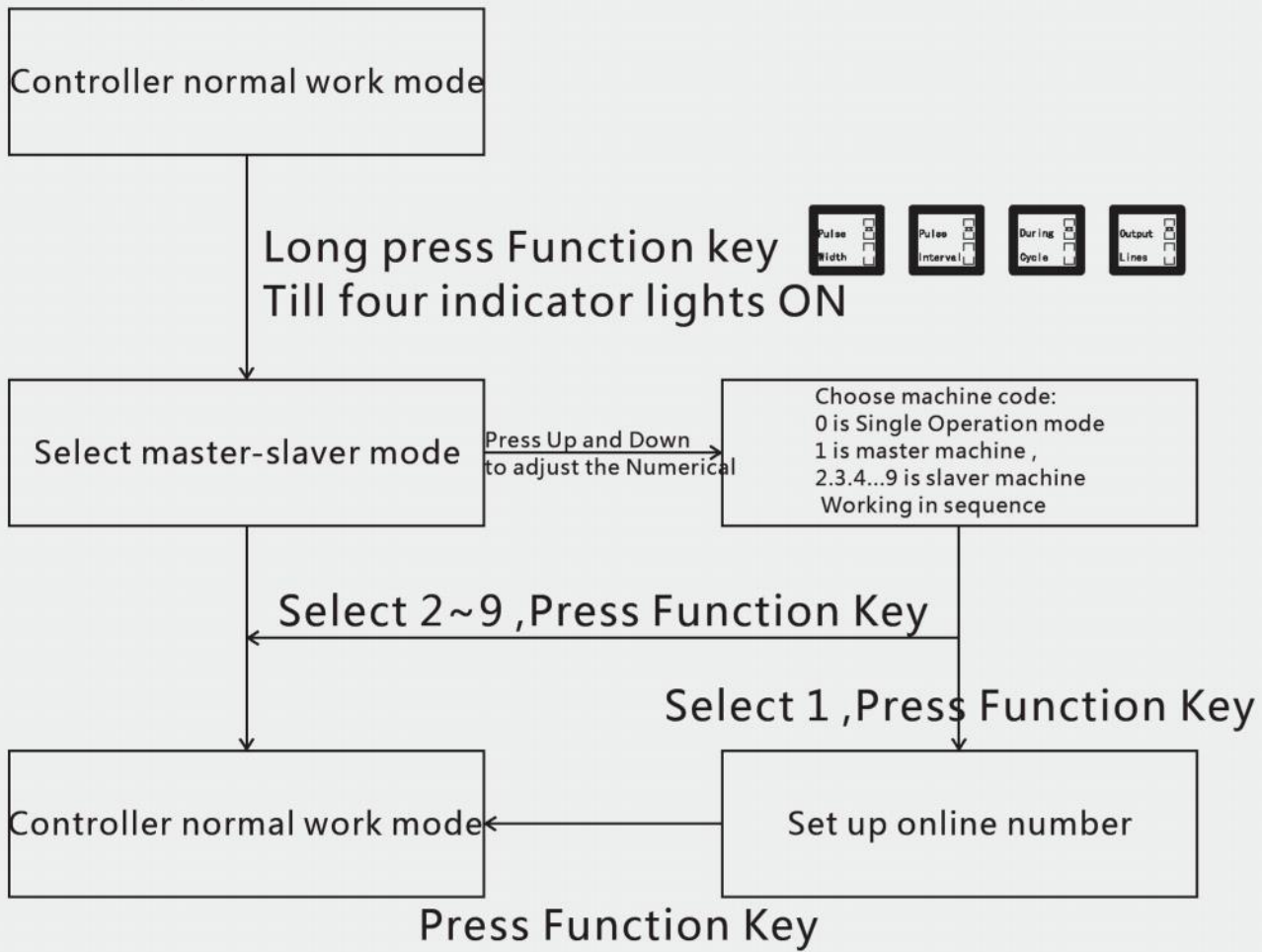
Model	PIC-20AL	PIC-20DL	PIC-28AL	PIC-28DL
Input voltage	220VAC ±10% 50Hz/60Hz			
Output voltage	220VAC	24VDC	220VAC	24VDC
Output current	1.5A Max			
Pulse width	(1-9999)*0.01sec			
Pulse interval	(1-9999)*1sec			
Cycle interval	(1-9999)*1sec			
Output lines	(1-20)*1line		(1-28)*1line	
Working environment	-10~70°C			
Working humidity	35~90%RH			
Weight	Approx 1.5Kg			
Dimension	260mm*180mm*110mm			

On-line operation mode

1.mode of connection

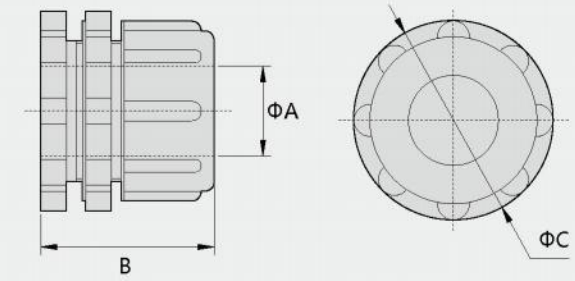


2.setting mode



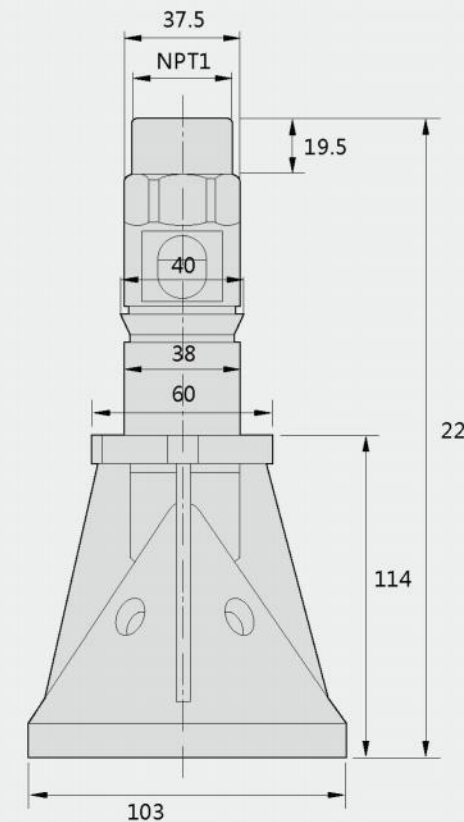
⚠ Attention

1. On-line operation mode will be allowed maximum of 9 Controller series connection .Total 180 output lines
2. On-line Number must be equal to setting number of master machine ,Otherwise There will be a system exception
3. Slaver Machine must arrange in order ,There should not appear hop count situation



Overall dimension				
Model	symbol	A	B	C
RB-25		35	67.5	77.5
RB-40		50	92.5	92

Plastic Venturi Tube



Diaphragm

Diaphragm is the one of the most important components in pulse valve, our diaphragm is made from import material. It has good antifatigue, ageing resistance etc. We offer better quality than others in this field. We also offer special diaphragms as per customer's request.

